

THE BEEHIVE

KEEPING LOCAL BEEKEEPERS INFORMED

Northwest Ohio Beekeepers

October 2005

Volume 17, Issue 8

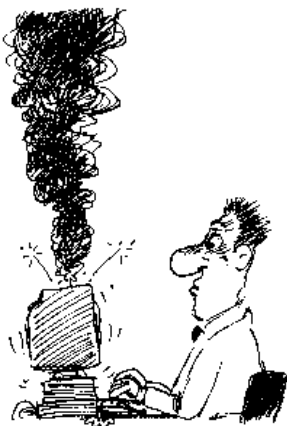
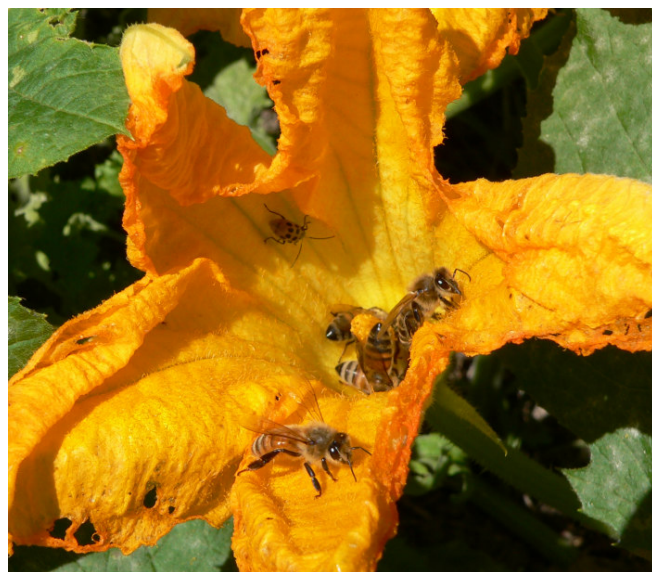
Meeting, October 24th

The agenda for the October meeting includes nominations of officers to serve next year and a discussion of winter preparations. Bring in samples of your honey, Dwight Wilson will be bringing in a refractometer to test the moisture content. Be sure to bring any ideas you have for the meeting next month and those in the coming year.

Is Fall Here?

Fall is here, or is it? It's hard to believe with the warm weather we still are having that it's nearly the end of October. And while the golden rod in my backyard has dried up still have a little life in them yet and even the pumpkins have decided to put on some new blooms. It has been a welcome change from the early frosts we had last year. Hopefully everyone's hives have managed to put on a few extra pounds of honey for the long winter ahead.

Still, the warm weather is not going to last and we need to think of our winter preparations. A few things are important to overwintering hives. (continued on page 2)



Presidents Corner

Dwight has had computer problems this month and couldn't send in his message this month. Could it be a coincidence hunting season started this month? :)

Hostess

October: Ed Berger & Tom Krogman
November: Dwight Wilson
January: Alan Wischmeyer
February: Bill Knack
March: Jyline Brenneman
April: John Hattery
May: Tim Arheit



For Sale: Used Beekeeping Equipment

Foundation, boxes, uncapping plane, observation hive, inner covers, suit, veil, bottom boards, telescoping covers, excluders and more!

Call Willis Boutwell 419-643-3523

A strong healthy hive with a good queen, plenty of winter stores and proper ventilation are key to overwintering..

By now late summer/early fall inspections should be complete and any required medication should have been done. There still is a little time to remove those strips or applicators from the hive per instructions. Most treatments require a 30-45 day treatment period, and new queens aren't available so there is little more that can be done this year with weak hives. Your best bet is to combine them either with a strong hive, or combine several weak hives together. Typically this is done by placing newspaper on the body of one hive and then placing the other hive on top. While the queens may sort themselves out, it's also best to remove the queen you do not want to keep.

Winter stores. Italian hives can require 60-80 pounds of honey, and carniolan hives 40-60 pounds to survive the winter. You can judge the weight of the hive by lifting one side. Light hives should be feed 2:1 sugar syrup (two parts sugar to 1 part water by weight), or corn syrup. Frame feeders or an inverted jar or bucket on top of the hive work best in cool weather and are effective so long as it's warm enough for the cluster to reach the feeder.

Ventilation. Ohio's winters, and even the late fall and early spring, tend to be very wet and humid. Plus the bees produce a lot of excess water through respiration in the cluster that can condense in the hive if it cannot exit the hive. This can create an unhealthy environment for the bees promoting mold and dysentery. Thus proper ventilation is very important over the winter. This can be accomplished in a wide variety of ways. Some use a 3/4" hole in the upper supper or a notch in the inner cover and yet other simply place a nail under the inner cover as a spacer to raise it up slightly.

Location. Some spots can be bad for overwintering. Low lying lands that may flood with spring rains, locations that are especially susceptible to wind, underneath trees with dead limbs, etc.

Wrapping, insulation, etc. It's generally not considered necessary to wrap hives in our area or provide additional insulation, though the general consensus by the association's members is that it does help somewhat.. Wrapping with tar paper can reduce drafts in poorly maintained equipment and captures some solar heat that may help the cluster move around in cold weather. Insulation helps hold in precious heat and more importantly provides a warmer ceiling in the hive reducing condensation over the cluster.

October Checklist

1. Complete fall medications if required and remove the strips/applicators as per instructions.
2. Weak hives should be combined so they stand a chance of surviving the winter.
3. Check hives weight and feed if too light.
4. Reduce entrances and/or install mouse guards if they aren't already reduced.
5. Provide upper ventilation.
6. Tidy up the bee yard. Mow the grass, trim the trees overhanging the hives, clean the debris from the yard.

Recipe Of The Month

White Bread

1st Honey White Bread, Wooster Tri-County Beekeepers Association, 2005
Marion Yoder, Big Prairie, OH

Ingredients:

- 2 cups warm water
- 2 tablespoons yeast
- 1/2 cup olive oil
- 1/2 cup honey

Mix the above ingredients and let set 5 minutes. Add 1 tablespoon salt and enough flour to make a soft dough. Oil and flour hands and knead, let rise and knead again. Place in pans and let rise again. Bake at 350 degrees for 1/2 hour. Butter top whiel hot and remove from pan while still warm. Makes 2 loaves.



Wheat Bread

1st—Whole Wheat, 3-grain Bread, Wooster Tri-County Beekeepers Association, 2005
Mary Hooker, Coshocton, OH

- | | |
|--------------------------|------------------------------|
| 1 1/4 cup boiling water | 2 packages yeast |
| 1 cup old fashioned oats | 1/2 cup warm water |
| 1/4 cup milled flax seed | 2 beaten eggs |
| 1/3 cup cracked wheat | 1 1/2 cup unbleached flour |
| 1/3 cup oil | 4 to 4 1/2 whole wheat flour |
| 1/3 cup honey | |
| 2 teaspoon salt | |

Combine 1st 7 ingredients. Cool to lukewarm. Stir in 2 cup flour; beat well. Soften yeast in warm water; add yeast and eggs to flour mixture. Add as much of the remaining flour as you can mix in with a spoon. Turn onto a lightly floured surface; knead in enough remaining flour to make a moderately stiff dough that is smooth and elastic (8-10 min.) Place dough in a greased bowl, cover and let rise in a warm place until double (1 1/2 hrs.) Punch down, turn out onto lightly floured surface. Divide dough in half. Cover, let rest 10 minutes. Grease 2 bread pans. Punch down again and shape dough by patting and stretching into 2 rectangles approximately 8"x16". Roll up (from short end) tightly sealing end and shaping into smooth loaf; place in pans. Cover, let rise until above tops of pans. Bake 35-40 min. at 350 or until nicely browned and turns out of pans easily. Remove from pans and cool on rack.

FOR SALE : USED 10 FRAME BEEKEEPING EQUIPMENT

Supers, bottom boards, inner covers, telescoping lids
Ralph Wischmeyer (419) 523-4145

Prudential Dawn M. Arheit, ABR

Vandemark Realty & Associates
2150 Eastown Rd., Lima, Ohio 45807
Bus. 419 331-7653 fax 419 331-3377



NWOBA

Northwest Ohio Beekeepers

Tim Arheit - Editor
330 Sunderland Road
Delphos, Ohio 45833

Email: tarheit@watchtv.net

NWOBA Board of Officers

President.....	Dwight Wilson, 6833 Willowick Rd., Findlay, OH 45840.....	(419) 293-2369
V. President.....	Tim Arheit, 330 Sunderland Road, Delphos, OH 45833.....	(419) 647-8018
Secretary.....	Alan Wischmeyer, 9154 SR. 109, Ottawa, OH. 45875.....	(419) 523-6855
Treasurer.....	George Brenneman, 208 S. Gau St., Rawson OH. 45881.....	(419) 963-3391
Historian.....	Lodema McCullough, 24871 Rd. G-24, Continental, OH. 45831.....	(419) 594-2486
Directors.....	Jeff Longstaff, Larry Mccullough, Ed Alt	
Editor.....	Tim Arheit, 330 Sunderland Road, Delphos, OH 45833.....	(419) 647-8018
Librarian.....	Edwin Alt, 9926 SR 109, Ottawa, OH. 45875.....	(419) 523-3497

Membership is open to anyone interested in bee culture. Dues are \$6 per calendar year. This is a family membership. Everyone is welcome to attend meetings. Members are encouraged to submit articles to the editor for publishing.

Meetings are held the 4th Tuesday of each month at the Pandora School, Pandora, Ohio. Time 7:30 p.m. Field trips and or picnic in June, July and August as announced in "The Beehive". No Meeting in December

The Associations' book and video library is free to be used by all members. Materials may be withdrawn from the librarian at the meeting and are to be returned at the next meeting.

"The Beehive", serving Northwest Ohio, is the official publication of the Northwest Ohio Beekeepers Association.

C. Bee Apiaries

New Beekeeping Supplies For Sale

Call Chris Burch

Bee Pollen and Clean Beeswax For Sale

Clean Pollen \$15.00/lb.

Clean Beeswax \$6.00/lb.

Candles Available

Ray Moeller (419) 586-7312 rgmoeller@bright.net